



## 211A Pettits Lane North Romford, London, RM1 4NU

2 bedroom

- 1st floor flat
- open plan kitchen
- bright and spacious living room
- electric heating
- comes unfurnished
- we have selection of 2 flats in the building
- shops & amenities nearby
- the closest transport link - TFL Rail - Gidea Park

**£1,400 PCM**

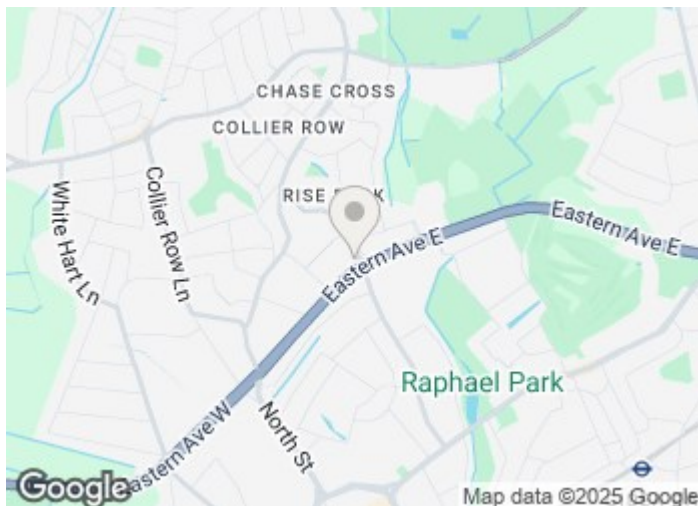
## 211A Pettits Lane North

Romford, London, RM1 4NU

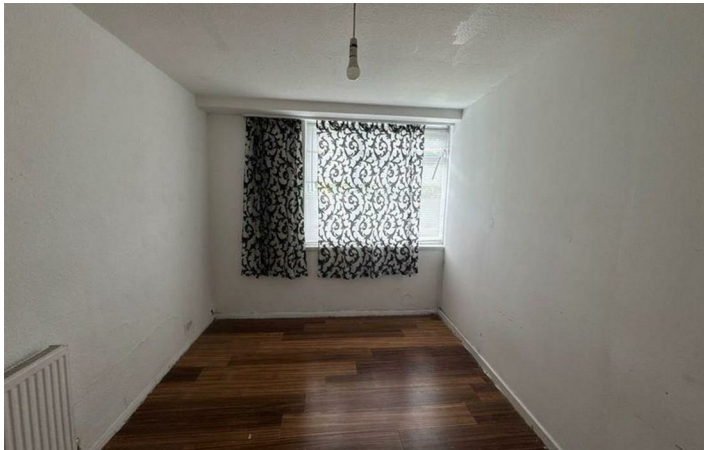


- 3 Available Rooms

- 2 Double Bedrooms



**Directions**





Floor Plan

These particulars, whilst believed to be accurate are set out as a general outline only for guidance and do not constitute any part of an offer or contract. Intending purchasers should not rely on them as statements of representation of fact, but must satisfy themselves by inspection or otherwise as to their accuracy. No person in this firms employment has the authority to make or give any representation or warranty in respect of the property.

